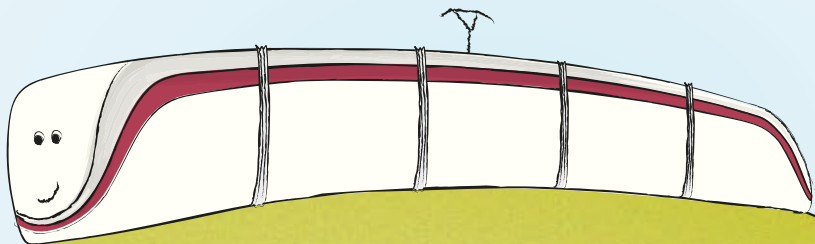


ALL ABOARD WITH TILLY THE TRAM



THIS PACK BELONGS TO

.....

.....



TILLY'S CHECKLIST

1. Be the Driver

☐

2. Pippa's Word Search

☐

3. Tilly's Adventure

☐

4. Trivia with Travis

☐

5. Spot the Difference

☐

6. Fill in the Blanks with Bonnie

☐

7. Read & Learn

☐

8. Noisy Pairs

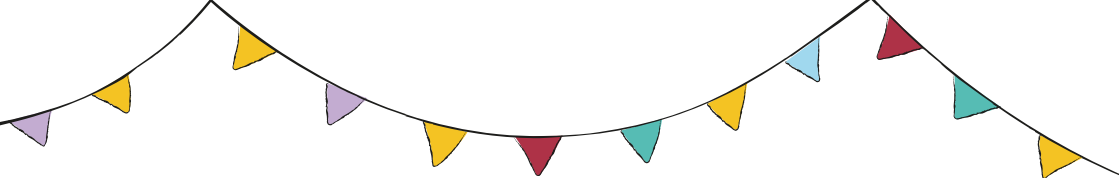
☐

9. Being Safe

☐

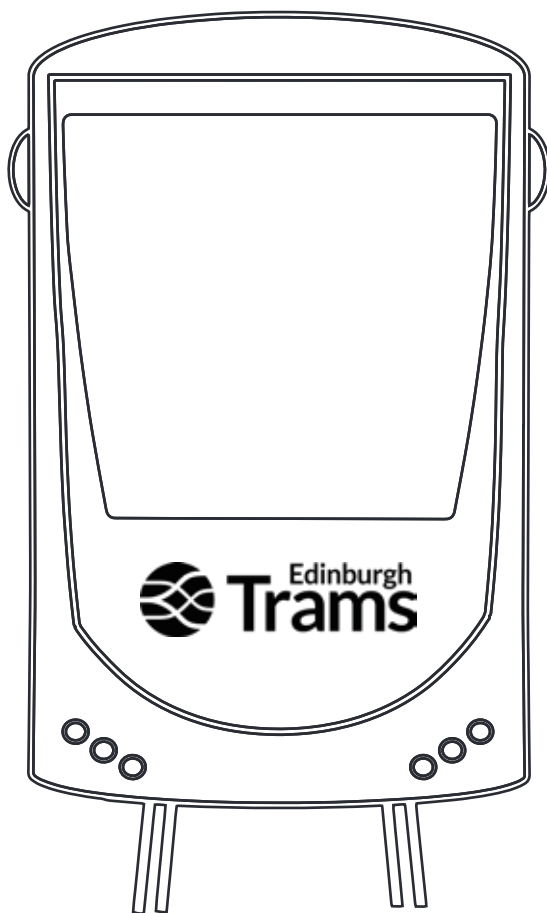
10. Design Your Own Tram

☐



BE THE DRIVER

Draw yourself inside the tram as our Driver and colour in our tram. Why not add some famous landmarks in the background?





PIPPA'S WORD SEARCH

Can you find the tram related words in the word search below? You can tick the words off as you find them!



BELL ☐

EDINBURGH ☐

JOURNEY ☐

SAFETY ☐

TICKET ☐

TRAM ☐

DRIVER ☐

HORN ☐

MURRAYFIELD ☐

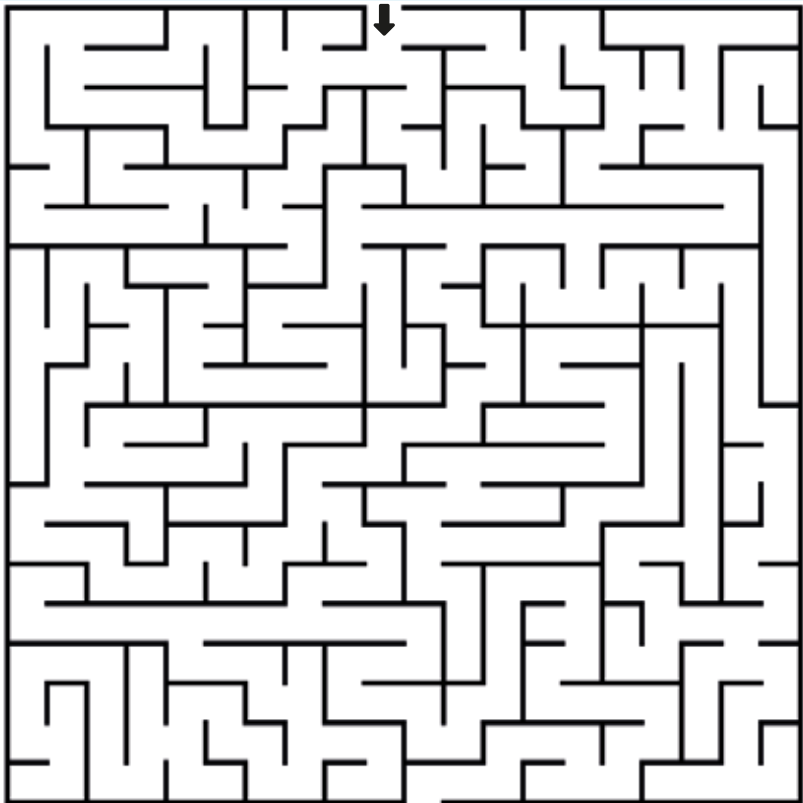
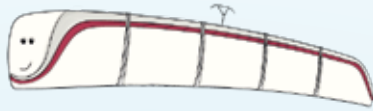
STOP ☐

TRACK ☐

TRANSPORT ☐

TILLY'S ADVENTURE

Help Tilly the Tram make her way through the maze to reach Bobby the Bike at the other end!





TRIVIA WITH TRAVIS

Take some wild guesses at our Tram Trivia questions below!

1. How many seats are on an Edinburgh Tram?

.....

.....

2. How many stops are there along our route? Can you name them all?

.....

.....

3. What noise does a tram make?

.....

.....

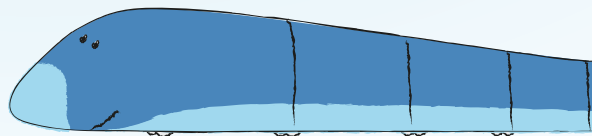
4. How many elephants weigh the same as one tram?

.....

5. Where is drivers horn located on a tram?

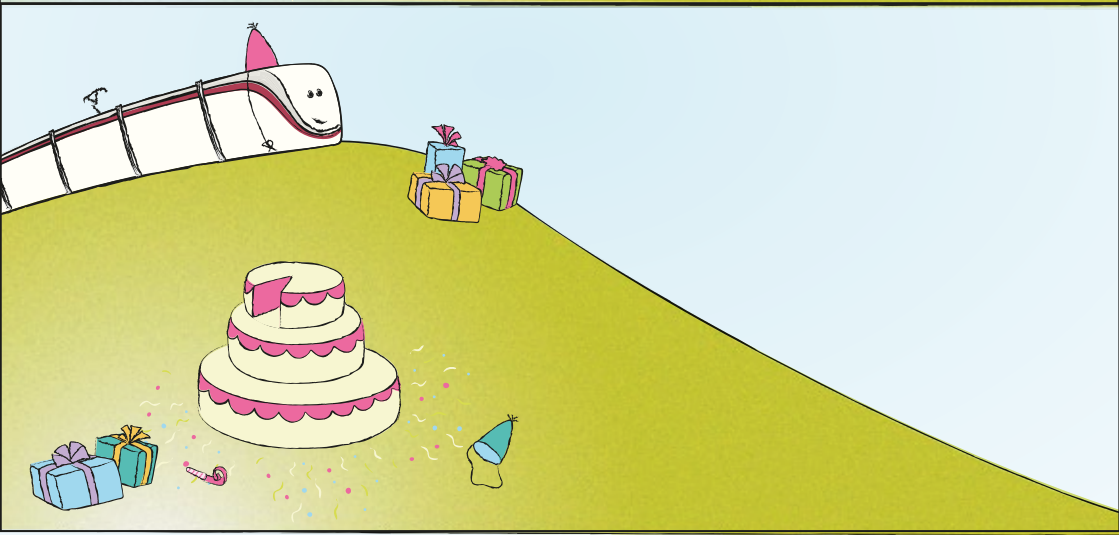
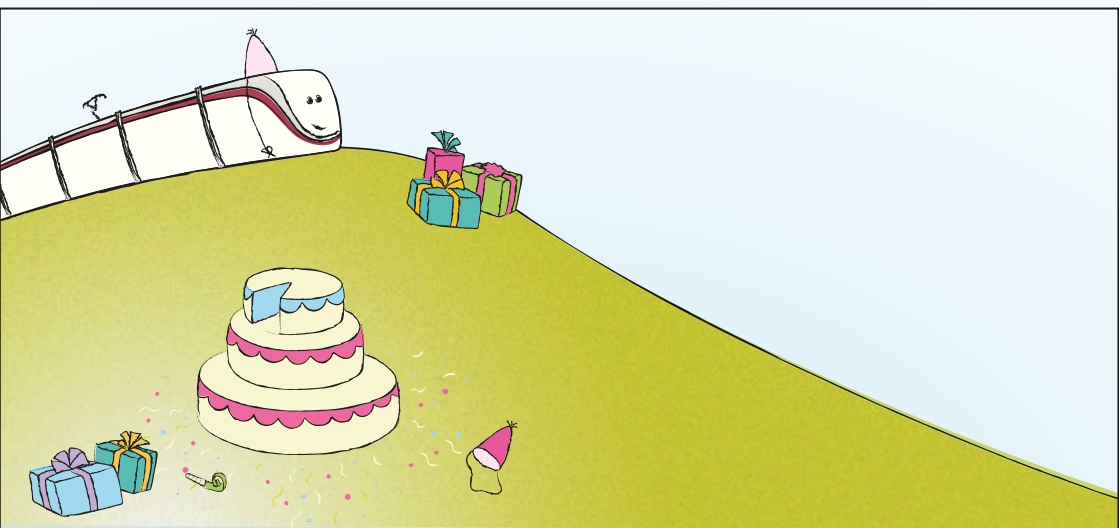
.....

.....



SPOT THE DIFFERENCE

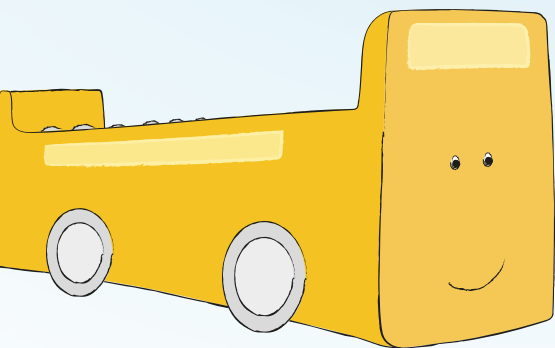
There are 6 differences to be found below. Can you find them all?





FILL IN THE BLANKS WITH BONNIE

1. Tilly is a T_a_.
2. Bonnie is a b_s.
3. They tra_el in Ed_n_ur_h.
4. Pippa the P_a_e likes to f_y high.
5. Tilly the Tram goes D_ng D_ng D_ng.
6. Be s_fe around the Tra_s.





READ AND LEARN

Read part of the book 'Tilly the Tram's Noisy Birthday' and answer the questions below.

At her stop, sat Tilly the Tram. When along flew Pippa the Plane, just home from Japan.

"Wow! What a loud noise Pippa, aren't you fantastic? If I could make a noise like you wouldn't that be tramtastic?! If only I could shout and bawl, for it's my birthday after all!"

"Let's go find your sound Tilly, you must have left it somewhere silly!"

Past the airport Tilly and Pippa go. But who is this with blue lights a-glow? Freddy the Fire engine comes speeding from the station, racing to get to his destination.

"Wow! What a loud noise Freddy, you're a trooper. If I could make a noise like you, wouldn't that be super?! If only I could shriek and yell, for it's my birthday and I could tell."

"Don't worry Tilly, we'll find your sound." And off they go, Edinburgh bound.

1. Where had Pippa the Plane just flown home from?

2. What special day was it for Tilly?

3. What kind of transport was Freddy?

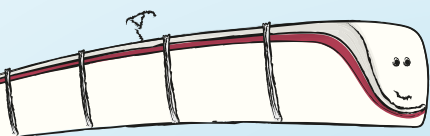
4. Which city were Tilly, Pippa and Freddy going to?

5. Can you make the noise that Freddy makes?

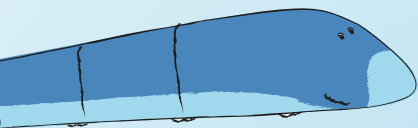


NOISY PAIRS

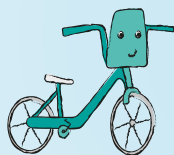
The gang have lost their sounds! Draw a line to match them up.



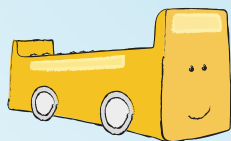
WHOOOOOSH



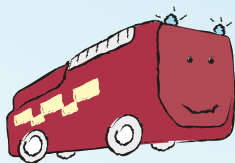
NEEEEEEE-NAWWWWW



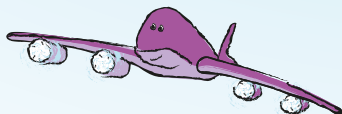
CHOOO-CHOOOO



RITTING-RITTING



DING - DING - DING



BEEEEP
BEEEEP



BE SAFE AROUND TRAM'S

Tilly the Tram and her friends have put together some handy tips for you to follow when you're out and about near the tramway.



1

LOOK AROUND YOU

Make sure you look around you for Tilly before you walk across the road, stop and give her a wee wave as she glides past.



2

LISTEN

If you're close to the road make sure to listen for Tilly's "ding-ding", as unlike a bus or a car, she doesn't have a loud engine that goes ROOOOOAR.



3

ALWAYS USE THE DESIGNATED CROSSWAYS

Whenever you are out in Edinburgh, especially near the tramway, make sure to use the designated crossings. And remember, not all crossings have a green man.



4

STEP BACK FROM THE PLATFORM

Tilly the Tram is slightly wider than her tracks, so when she comes gliding into the stop make sure you stay back from the white line. That way you'll keep all ten toes!



DESIGN YOUR OWN TRAM

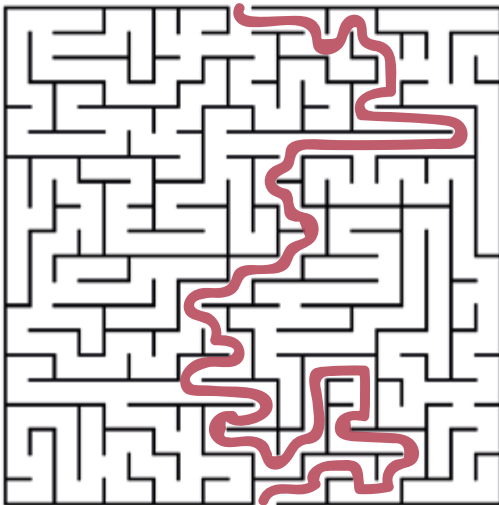
Use the space below to draw your very own
Tilly the Tram!

This part is for the grown-ups!

Pippa's Word Search



Tilly's Adventure



Trivia with Travis

1. How many seats are on an Edinburgh Tram?

A: 78

2. How many stops are there along our route? Can you name them all?

A: 16.

Edinburgh Airport, Ingliston Park and Ride, Gogarburn, Edinburgh Gateway, Gyle Centre, Edinburgh Park Central, Edinburgh Park Station, Bankhead, Saughton, Balgreen, Murrayfield, Haymarket, West End, Princes Street, St Andrew Square and York Place.

3. What noise does a tram make?

A: DING DING DING

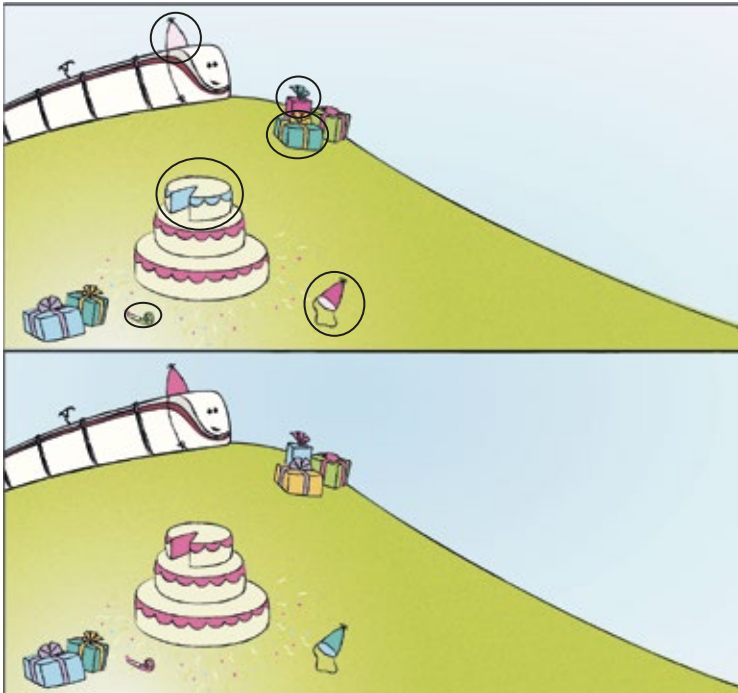
4. How many elephants weigh the same as one tram?

A: 9 African Elephants.

5. Where is drivers horn located on a tram?

A: A pedal on the floor in the drivers cab.

Spot the Difference



Fill in the blanks with Bonnie.

1. Tilly is a Tram.
2. Bonnie is a bus.
3. They travel in Edinburgh.
4. Pippa the Plane likes to fly high.
5. Tilly the Tram goes Ding Ding Ding.
6. Be safe around the Trams.

Read and Learn

1. Where had Pippa the Plane just flown home from?

A: Japan

2. What special day was it for Tilly?

A: Her Birthday

3. What kind of transport was Freddy?

A: Fire Engine

4. Which city were Tilly, Pippa and Freddy going to?

A: Edinburgh

5. Can you make the noise that Freddy makes?

A: Neee-Nawww

Noisy Pairs





WE HOPE YOU HAVE ENJOYED ALL ABOARD WITH TILLY THE TRAM!

We would love to see your finished packs so please don't be shy, get your parents or carers to send us your finished pack photos in on our social media channels and we will share them with our online community of tram fans everywhere!

Follow us @EdinburghTrams on Twitter and @EdinburghTramsOfficial on Facebook or use the hashtag #TillytheTram.